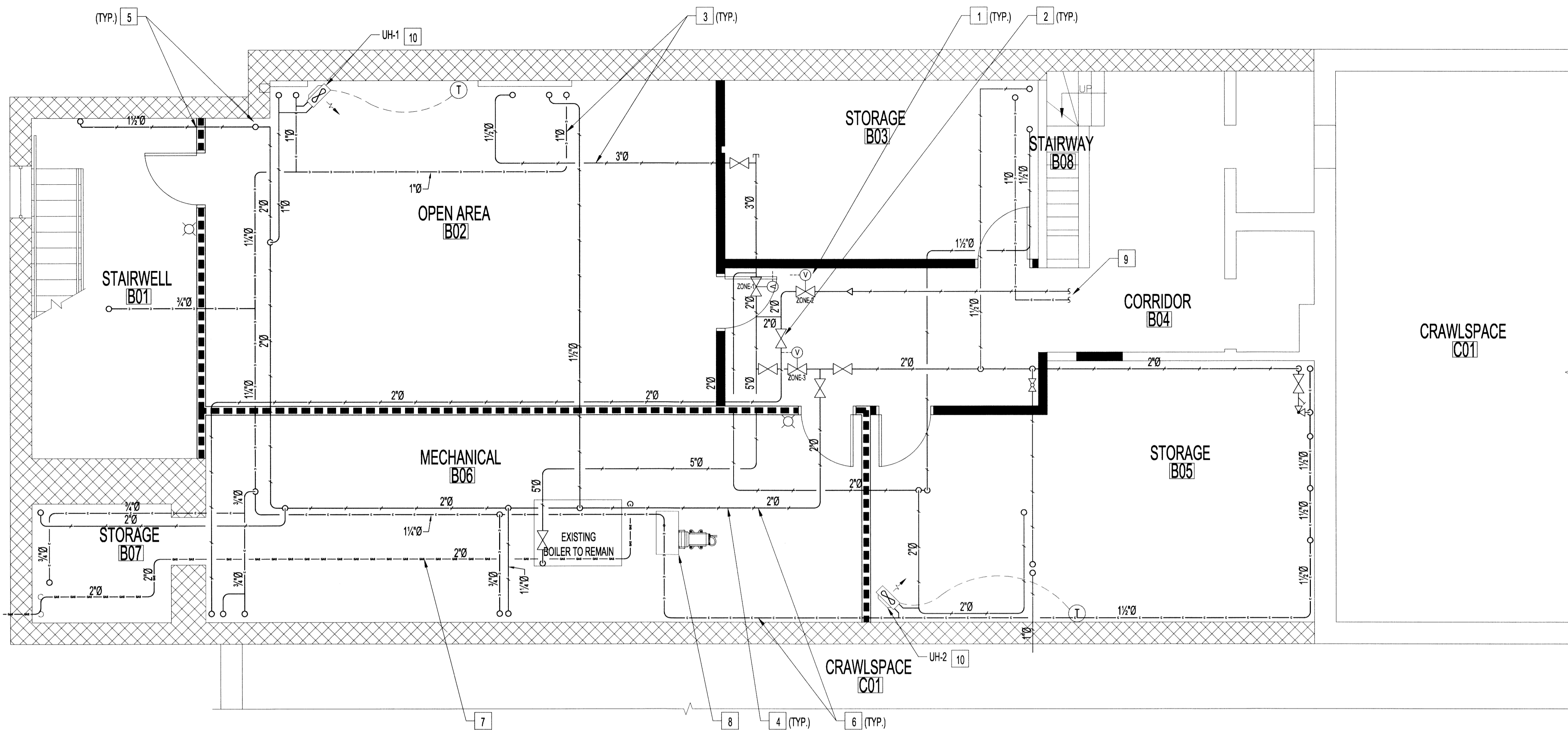
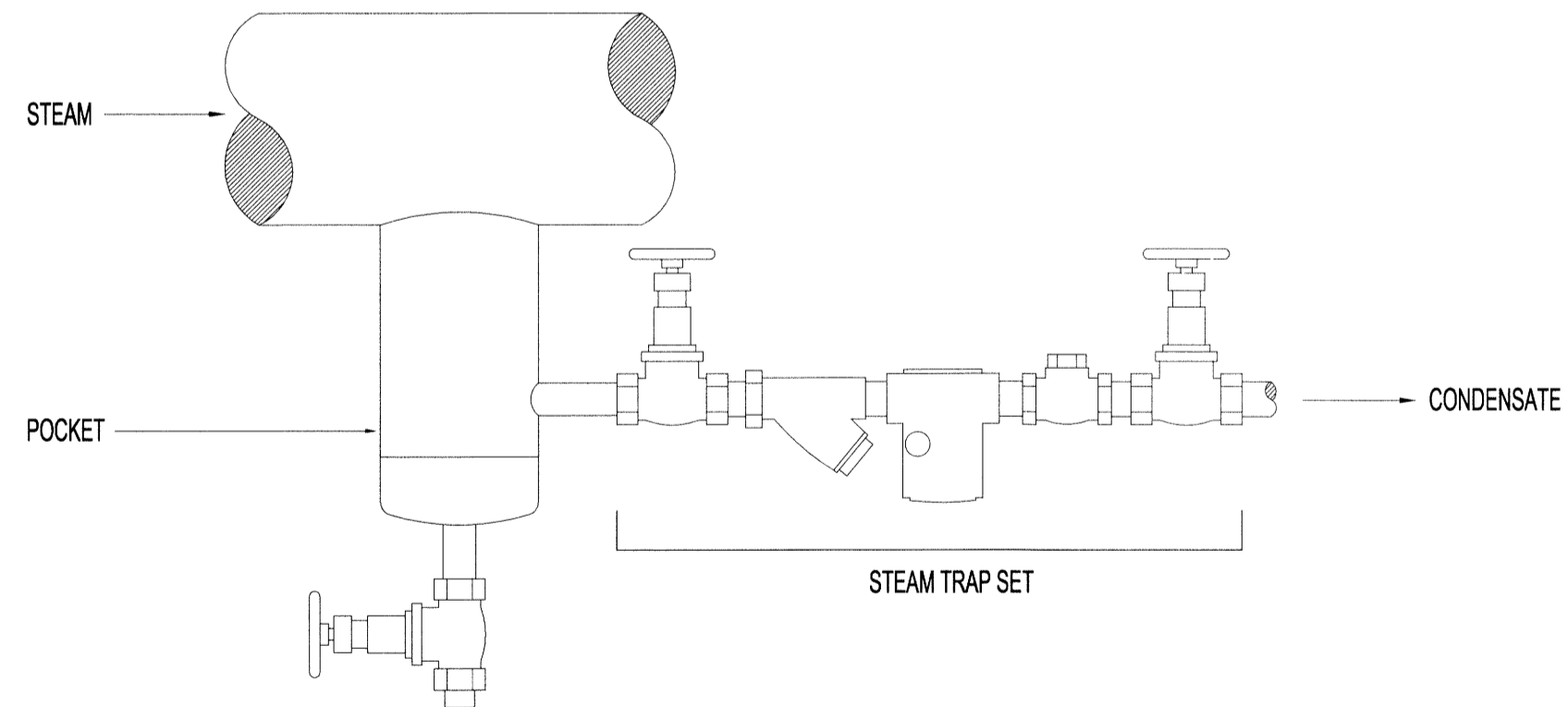


NOTES:



1 BASEMENT FLOOR PLAN - MECHANICAL RENOVATION  
M2 | M2 SCALE: 1/4"=1'-0"



2 TYPICAL STEAM TRAP SET AND POCKET DETAIL  
M2 | M2 SCALE: N.T.S.

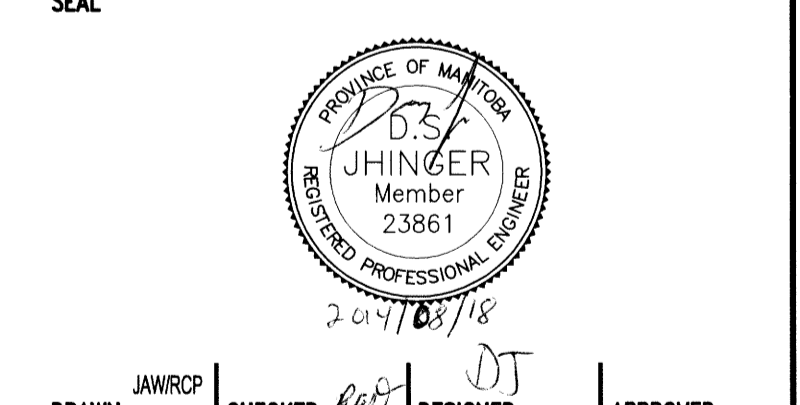
**BASEMENT MECHANICAL RENOVATION NOTES:**

- 1 RE-INSTALL STEAM ZONE VALVES 1, 2, AND 3.
- 2 NEW GATE VALVES - SUPPLY AND INSTALL TO SUIT LINE SIZE.
- 3 INSTALL NEW STEAM AND CONDENSATE PIPING, ISOLATION VALVES, FITTINGS, HANGERS, ETC. LOCATION AND SIZES AS PER DRAWINGS AND UP TO 12" ABOVE MAIN FLOOR LEVEL TO RECONNECT TO EXISTING. REINSTALL EXISTING RADIATORS ON MAIN FLOOR IN EXACT LOCATION PRIOR TO REMOVAL. STEAM PIPING TO BE SCHEDULE 40 BLACK. GRADE CONDENSATE PIPING FOR PROPER DRAINAGE/RETURN TO CONDENSATE TANK. INSTALL PIPING IN CEILING SPACE WHERE APPLICABLE.
- 4 PRESSURE TEST ALL NEW STEAM LINES.
- 5 FIRE SEAL (1 HOUR RATING) AROUND ALL PENETRATIONS THROUGH FLOOR SLAB AND FIRE RATED WALLS.
- 6 INSULATE ALL STEAM LINES AND CONDENSATE LINES WITH 1" FIBREGLASS WITH CANVAS JACKET.
- 7 NEW NATURAL GAS SUPPLY LINE - CONNECT TO EXISTING BOILER.
- 8 NEW CONDENSATE TANK AND BOILER FEED PUMP. PIPE TO CONDENSATE RETURN ON BOILER - SUPPLY AND INSTALLATION OF CONDENSATE TANK AND PUMP BY OTHERS. PROVIDE ISOLATION VALVES, STRAINERS, AND CHECK VALVES AND PIPE IN ACCORDANCE WITH BOILER MANUFACTURER'S RECOMMENDATIONS FOR CONDENSATE RECEIVER TANK INSTALLATIONS.
- 9 CONNECT NEW PIPING TO EXISTING.
- 10 INSTALL NEW UNIT HEATER TIGHT TO CEILING. MAINTAIN POSITIVE SLOPE OF CONDENSATE BACK TOWARDS CONDENSATE TANK. PROVIDE PIPING AND VALVING PER MANUFACTURER'S RECOMMENDED INSTALLATION INSTRUCTIONS.

MECHANICAL SYMBOLS	
SYMBOL	DESCRIPTION
	ZONE VALVE
	GATE VALVE
	ANGLE VALVE
	STRAINER
	THERMOSTAT
	NEW FIRE EXTINGUISHER
	NEW STEAM PIPING
	NEW CONDENSATE PIPING
	NEW NATURAL GAS PIPING
	NEW WALLS - SEE WALL TYPES
	NEW WALLS - 1 HOUR FIRE RATED - SEE A1

MECHANICAL EQUIPMENT SCHEDULE	
TAG	DESCRIPTION
UH-1,2	TRANE 18-S STEAM UNIT HEATER, 115V, 1/2HP, 800RPM MOTOR, CW LIGHT DUTY WALL-MOUNT THERMOSTAT.

0	ISSUED FOR CONSTRUCTION	DJ	AUG 18 2014
No.	REVISION/DESCRIPTION	BY	DATE



DRAWN	JAW/RCP	CHECKED	Rg/B	DESIGNED	DT	APPROVED
DATE	2014.07.14	USER		APPROVAL		

THE CITY OF WINNIPEG  
PLANNING, PROPERTY AND  
DEVELOPMENT DEPARTMENT  
MUNICIPAL ACCOMMODATIONS DIVISION  
3-65 GARRY STREET, R3C 4K4

PROJECT  
AMBULANCE STATION # 3  
STRUCTURAL & OCCUPANCY UPGRADES  
DESIGN OF STRUCTURAL UPGRADES  
588 ST. MARY'S ROAD



SCALE	PROJECT No:	SHEET No:
AS SHOWN	2013-047	M2